



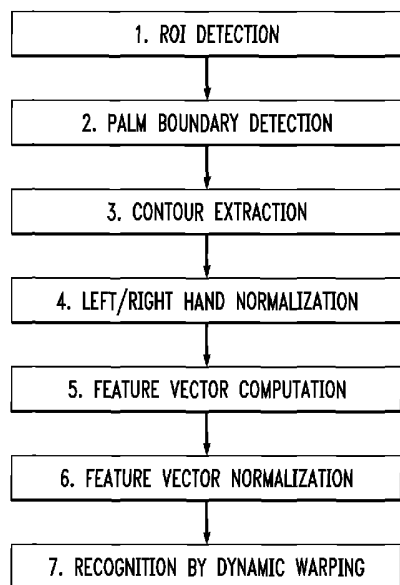
- (51) International Patent Classification: **Alexander, B.**; 35-3 Obrucheva Street, Apt. 16, Moscow, 117246 (RU).
G06K 9/46 (2006.01)
- (21) International Application Number: PCT/US2014/047744
- (22) International Filing Date: 23 July 2014 (23.07.2014)
- (25) Filing Language: English
- (26) Publication Language: English
- (30) Priority Data: 2014101965 22 January 2014 (22.01.2014) RU
- (71) Applicant: **LSI CORPORATION** [US/US]; 1320 Ridder Park Drive, San Jose, CA 95131 (US).
- (72) Inventors: **PETYUSHKO, Alexander, A.**; 21 Aviationsnaya Street, Apt. 76, Bryansk, Moscow, 241037 (RU). **MAZURENKO, Ivan, L.**; 36a Molodyezhnaya Street, Apt. 51, Khimki, Moscow, 141407 (RU). **BABIN, Dmitry, N.**; 6-1 Skulptora Mukhinoi Street, Apt. 6, Moscow, 119633 (RU). **LETUNOVSKIY, Aleksey, A.**; 64 Roktova, 3k2, Moscow, 117593 (RU). **KHOLODENKO, Alexander, B.**; 35-3 Obrucheva Street, Apt. 16, Moscow, 117246 (RU).
- (74) Agent: **RYAN, Joseph, B.**; Ryan, Mason & Lewis, LLP, 48 South Service Road, Suite 100, Melville, NY 11747 (US).
- (81) Designated States (unless otherwise indicated, for every kind of national protection available): AE, AG, AL, AM, AO, AT, AU, AZ, BA, BB, BG, BH, BN, BR, BW, BY, BZ, CA, CH, CL, CN, CO, CR, CU, CZ, DE, DK, DM, DO, DZ, EC, EE, EG, ES, FI, GB, GD, GE, GH, GM, GT, HN, HR, HU, ID, IL, IN, IR, IS, JP, KE, KG, KN, KP, KR, KZ, LA, LC, LK, LR, LS, LT, LU, LY, MA, MD, ME, MG, MK, MN, MW, MX, MY, MZ, NA, NG, NI, NO, NZ, OM, PA, PE, PG, PH, PL, PT, QA, RO, RS, RU, RW, SA, SC, SD, SE, SG, SK, SL, SM, ST, SV, SY, TH, TJ, TM, TN, TR, TT, TZ, UA, UG, US, UZ, VC, VN, ZA, ZM, ZW.
- (84) Designated States (unless otherwise indicated, for every kind of regional protection available): ARIPO (BW, GH, GM, KE, LR, LS, MW, MZ, NA, RW, SD, SL, SZ, TZ, UG, ZM, ZW), Eurasian (AM, AZ, BY, KG, KZ, RU, TJ, TM), European (AL, AT, BE, BG, CH, CY, CZ, DE, DK,

[Continued on next page]

(54) Title: IMAGE PROCESSOR COMPRISING GESTURE RECOGNITION SYSTEM WITH STATIC HAND POSE RECOGNITION BASED ON DYNAMIC WARPING

FIG. 2

200



(57) Abstract: An image processing system comprises an image processor having image processing circuitry and an associated memory. The image processor is configured to implement a gesture recognition system comprising a static pose recognition module. The static pose recognition module is configured to identify a hand region of interest in at least one image, to extract a contour of the hand region of interest, to compute a feature vector based at least in part on the extracted contour, and to recognize a static pose of the hand region of interest utilizing a dynamic warping operation based at least in part on the feature vector.

WO 2015/112194 A3



EE, ES, FI, FR, GB, GR, HR, HU, IE, IS, IT, LT, LU,
LV, MC, MK, MT, NL, NO, PL, PT, RO, RS, SE, SI, SK,
SM, TR), OAPI (BF, BJ, CF, CG, CI, CM, GA, GN, GQ,
GW, KM, ML, MR, NE, SN, TD, TG).

Published:

— *with international search report (Art. 21(3))*

(88) Date of publication of the international search report:

5 November 2015

INTERNATIONAL SEARCH REPORT

International application No.

PCT/US2014/047744

A. CLASSIFICATION OF SUBJECT MATTER

IPC(8) - G06K 9/46 (2014.01)

CPC - G06F 3/017 (2014.09)

According to International Patent Classification (IPC) or to both national classification and IPC

B. FIELDS SEARCHED

Minimum documentation searched (classification system followed by classification symbols)

IPC(8) - G06K 9/00, G06K 9/46, G10L 15/12 (2014.01)

USPC - 704/ 231, 241; 715/ 848, 863; 382/ 103, 195

Documentation searched other than minimum documentation to the extent that such documents are included in the fields searched

CPC - G06F 3/017, G10L 15/24, G06K 009/00/355, G06F 2203/0381 (2014.09)

Electronic data base consulted during the international search (name of data base and, where practicable, search terms used)

Orbit, Google Patents, Google Scholar, Google, IEEE

C. DOCUMENTS CONSIDERED TO BE RELEVANT

Category*	Citation of document, with indication, where appropriate, of the relevant passages	Relevant to claim No.
X	CN103294996 A (CHENG et al.) 11 September 2013 (11.09.2013) entire document	1, 3-15
---		-----
Y		2, 16-20
Y	CN103455794 A (FENG et al.) 18 December 2013 (18.12.2013) entire document	2, 16-20
A	US 2012/0314902 A1 (KIMURA et al.) 13 December 2013 (13.12.2013) entire document	1-20
A	Vashist et al., "Dynamic Hand Gesture Recognition Using Neural Networks", International Journal of Science and Technology Volume 2 No. 6, June, 2013, retrieved on [09.01.2014]. Retrieved from internet: <URL: http://www.journalofsciences-technology.org/archive/2013/june_vol_2_no_6/7233331364987218.pdf >	1-20
A	Wenjun et al., "Dynamic Hand Gesture Recognition Using Motion Trajectories and Key Frames", IEEE 2010: retrieved on [09.01.2014]. Retrieved from internet: <URL: http://ieeexplore.ieee.org/xpl/login.jsp?tp=&number=5486760&url=http%3A%2F%2Fieeexplore.ieee.org%2Fxppls%2Fabs_all.jsp%3Farnumber%3D5486760 >	1-20

Further documents are listed in the continuation of Box C.

<p>* Special categories of cited documents:</p> <p>"A" document defining the general state of the art which is not considered to be of particular relevance</p> <p>"E" earlier application or patent but published on or after the international filing date</p> <p>"L" document which may throw doubts on priority claim(s) or which is cited to establish the publication date of another citation or other special reason (as specified)</p> <p>"O" document referring to an oral disclosure, use, exhibition or other means</p> <p>"P" document published prior to the international filing date but later than the priority date claimed</p>	<p>"T" later document published after the international filing date or priority date and not in conflict with the application but cited to understand the principle or theory underlying the invention</p> <p>"X" document of particular relevance; the claimed invention cannot be considered novel or cannot be considered to involve an inventive step when the document is taken alone</p> <p>"Y" document of particular relevance; the claimed invention cannot be considered to involve an inventive step when the document is combined with one or more other such documents, such combination being obvious to a person skilled in the art</p> <p>"&" document member of the same patent family</p>
---	---

Date of the actual completion of the international search

03 October 2014

Date of mailing of the international search report

14 NOV 2014

Name and mailing address of the ISA/US
 Mail Stop PCT, Attn: ISA/US, Commissioner for Patents
 P.O. Box 1450, Alexandria, Virginia 22313-1450
 Facsimile No. 571-273-3201

Authorized officer:
 Blaine R. Copenheaver

PCT Helpdesk: 571-272-4300
 PCT OSP: 571-272-7774